



BARRIER GEL

BARRIER GEL should be placed where porcelain etching is not desired. Care must be taken to avoid having the etchant contact glazed porcelain surfaces since these surfaces will lose their gloss.



PORCELAIN ETCHANT

It is very important to properly treat the porcelain to ensure that the repair is long-lasting. Porcelain may be treated via sandblasting the surface or by using a hydrofluoric acid.



PORCELAIN PRIMER (SILANE)

A silane coupling agent should be used in order to improve the adhesion to the porcelain and enhances the long-term durability of the repair.



ZIRCONIA - ALUMINA – METAL PRIMER

Z-PRIME™ Plus provides the highest bond strengths to Zirconia and Alumina metal oxide ceramics as well as other types of metals/alloys and composites.

Patent Pending.



OPAQUER

Some porcelain repair cases involve trying to mask exposed metal. The use of composite alone often times will not successfully block the dark metal hue, and an opaquer must be used. An opaquer (by definition) is opaque and therefore must be dual-cured to ensure complete polymerization.



PORCELAIN BONDING RESIN

When placed in a thin layer on the restoration, it will not only enhance the bond of the restoration, it will act as a wetting resin allowing the composite to spread evenly over the entire surface.

Bisco

INTRAORAL REPAIR KIT

Intraorales Reparatur-Kit
Kit de Réparation Intra-orale
Kit de Reparación Intraoral
Kit per Riparazioni Intra-orali
Intraoral Reparationssats
Intra-oral Repairationskit
Intraoraalinen Korjauskitti
Intra-oraal Reparatie Kit
Intraoralt Reparasjonssett
Kit de Reparação Intra-Oral

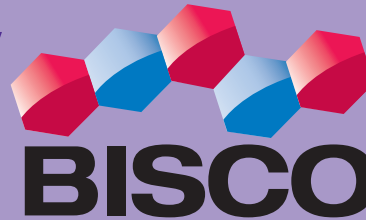
Σετ για ενδοστοματική επιδιόρθωση
Набор для интраоральной починки

REF B-22300K


CONTENTS:

1 Bottle PORCELAIN PRIMER (3ml), 1 Syringe 9.5% PORCELAIN ETCHANT (5g), 1 Syringe BARRIER GEL (5g), 1 Bottle Z-PRIME™ Plus (2ml), 1 Bottle PORCELAIN BONDING RESIN (6ml), 1 Bottle OPAQUER Catalyst (3ml), 1 Bottle OPAQUER Base Universal (3ml), Accessories, Instructions/MSDS

CE0459



 **BISCO, INC.**
1100 W. Irving Park Road
Schaumburg, IL 60193
U.S.A.
847-534-6000
1-800-BIS-DENT
www.bisco.com

 **BISCO France**
120, allée de la Coudoulette
13680 Lançon de Provence
France
33-4-90-42-92-92

 Phone

 Phone

INTC-041R2
Rev. 5/14



Rx Only

Single Use
Accessories

For Dental
Use Only



Caution



Consult
Instructions
For Use



Recommended
Storage Temp.



Toxic
PORCELAIN
ETCHANT



Corrosive



Flammable



Irritant

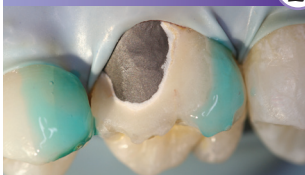
WARNING: Do not use this product until you have thoroughly read and understood these instructions.

Repair of Porcelain-Fused-to-Metal or Zirconia/Alumina Restorations

Step 1

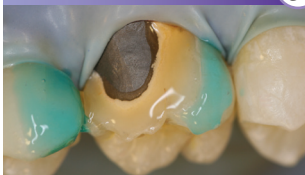
Always use a rubber dam. The use of a rubber dam during porcelain repair provides several benefits, including isolation from saliva during bonding and soft-tissue protection when using hydrofluoric acid intraorally.

Step 2



Remove the glaze & bevel (45 degree) the porcelain around the area to be repaired. Place BARRIER GEL on gingival tissue that may be exposed or porcelain to protect areas where etching is not desired.

Step 3



Remove cap from PORCELAIN ETCHANT, securely attach dispensing tip and verify etchant flow prior to applying intraorally. Apply PORCELAIN ETCHANT (9.5% HF) to the dry porcelain surface for 90 seconds. Continue to observe the etch site throughout the entire procedure. Suction the PORCELAIN ETCHANT, then rinse with a copious amount of water and air dry. The etched surface should appear dull and frosty (if porcelain has a white/chalky appearance, agitate a moist microbrush on the porcelain to remove salt and debris created by etching, rinse and dry).

NOTE: Porcelain may be sandblasted or abraded with a coarse diamond bur as an alternative to Hydrofluoric Acid Etching.

SEE INSTRUCTIONS FOR ADDITIONAL WARNINGS RELATED TO PORCELAIN ETCHANT

Step 4



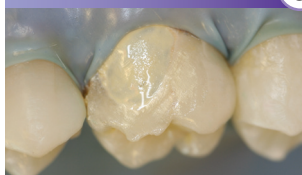
Apply 1 coat of PORCELAIN PRIMER to the etched porcelain surface and allow to dwell for 30 seconds. Dry with air syringe.

Step 5



Apply 1-2 coats of Z-PRIME™ Plus to the exposed metal/zirconia/alumina & dry with an air syringe for 3-5 seconds.

Step 6



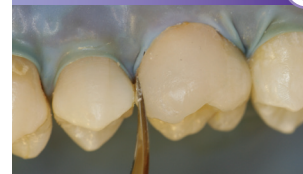
If metal masking is required, shake OPAQUER Base and Catalyst bottles well before dispensing. Dispense one drop each of Catalyst and Base onto a mixing pad, and mix with a brush tip. Apply a thin coat of OPAQUER only to the metal surface.

Step 7



Allow to self cure, or light cure for 5 seconds. An oxygen inhibited layer will be present on the surface once the curing process has completed. This is normal for this material.

Step 8



Apply a thin layer of PORCELAIN BONDING RESIN to the repair site. Spread composite evenly over the surface and light cure.

Step 9



Complete the repair and finish/polish.



Consult
Instructions
For Use

See instructions for use for the following repairs:
Repair of Porcelain & Lithium Disilicate Restorations
Repair of Old or Indirect Composite Restorations